
WHITETAIL HABITAT DESIGNS

& FOOD PLOT SPECIALTIES



"Creating the Next Generation's Whitetail Paradise"



2025 CATALOG

trying to maximize your hunting property?

the history: Our passion for hunting started at a young age chasing rabbits, squirrels and anything else that was fair game. Finally, after we were classified as “old enough” by our elders, we started chasing the ever adapting whitetail deer. Starting off in areas where deer were few, and far and in-between, we soon realized we had to make every move count to even get a deer within range. For many years we were hunting properties that were WAY below average. We never were consistently in the ball game for even a nice 3 year old let alone a mature buck. So we started asking ourselves, “Why?” Why don’t we have does and fawns? Why don’t we have deer numbers? Why don’t we have even young and up-and-coming bucks? Why are the deer spending more time on the neighbors property than ours? That’s when the interest in habitat development started. After searching for information, many a trial and error, and many, many mistakes we started gaining knowledge on the facts on the “why” part if the property isn’t producing. When we started changing those voids or needs, we started consistently being in the ballgame for mature deer (which is our personal goal). First the deer started spending most of their daylight time on our property, then the deer numbers increased and along with that we could help them get to the age level we wanted them be.

the plan: To attract and keep a deer herd you need quality bedding, a mixture of preferred food, and water. Deer love variety! Next is the design of where to put each need so that there is deer movement over the area of your property. The property is designed in a way so that there are potential ambush sites that have the best access possible given the acreage we have to work with. Every property is completely different and there are always different ways to design and set up that particular acreage. Owning the land means you can go the full way which is great. We know that there are limits to what we can do if it’s a lease or permission property, but we also have plenty of ideas for that scenario. There are always ways to improve your hunting property! Even though the phrase “the more acres the better” is very accurate, you actually don’t need a large tract to kill mature whitetails. We have consulted a property as low as 7 acres that had a mature buck killed on it the first year! If you can figure out the “why” of your property, then your chances of harvesting that trophy of a lifetime will increase drastically. With a combined experience of 30 plus years, we at WHD give you those ideas and help you put that property puzzle together. The experience of hunting and consulting in the heart of Ohio has gained us an edge when it comes to consulting and designing properties in hill country. We use terrain as our friend and help you understand how to use the terrain on your property to your advantage.

the goal: Understanding our clients’ goals helps us to design and create a property that fits his or her lifestyle. We understand that while one person’s goal is to have an opportunity at a mature buck on a consistent basis, the next land owner’s goal is to have a hunting farm with a lot of hunting opportunity for his family. There are many different goals and each one is unique and understandable. We understand that and we will always try to help you achieve your goal on your own personal property. Our goal is to provide a complete A to Z hunting and habitat management journey for any outdoors person looking to improve or maximize his or her property.

our mission

Using our God-given knowledge with passion and integrity, we want to help all outdoors people reach their hunting and recreational goals. We also give God the glory when success and happiness is given.

Myron Hershberger & Marion Miller

MARK 12:30-31

And thou shalt love the Lord thy God with all thy heart, and with all thy soul, and with all thy mind, and with all thy strength: this is the first commandment. And the second is like, namely this, Thou shalt love thy neighbour as thyself. There is none other commandment greater than these.



What does Whitetail Habitat Design do?

To sum it up: we offer a complete A to Z process for anything that involves Whitetail habitat and hunting land management. Please call us if you have any questions regarding your hunting property or recreational land. We will be able to direction and answer any questions regarding the outdoors here in Ohio and the surrounding states.

BELOW ARE SOME OF THE MAIN SERVICES WE PROVIDE:

- **Whitetail Property Consultation**..... See Page 4
- **Food Plot & Land Clearing**..... See page 5
- **Timber Stand Improvements (TSI)**..... See page 6
- **Food Plot Prep, Planting, & Maintenance**..... See Page 7
- **Miscanthus Planting**..... See Page 7
- **Switchgrass Prep, Planting, & Maintenance**..... See Page 8
- **Pond & Water Hole Installation**..... See Page 9
- **Invasive Species Control**..... See Page 10
- **Seedling Planting**..... See Page 11
- **Deer Orchards & Fruit Trees** See Page 11
- **Food Plot Seeds**..... See Page 12
- **Corn & Bean Seed**..... See Page 12

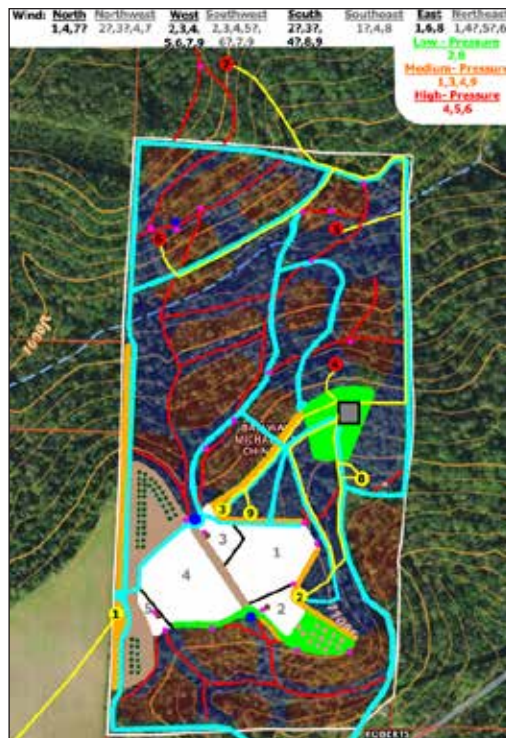
- **SEEDS & PRODUCTS** See Page 12
- **All Seeds & Fertilizers**
- **ATV & Hand Seeders**
- **Packer Maxx Cultipacker**
- **Trail Cameras & Accessories**
- **Cedar Post & Branch Holders**
- **Habitat Hook (for TSI work)**
- **Feeders**
- **Success Stories Picture Galley**..... Pages 29-33
- **Customer Feedback**..... Pages 33-34
- **Our Partners**..... Pages 36-43
- **Other Trusted Services & Products to help you** Pages 44-55



whitetail property consultation

We at Whitetail Habitat Designs design your habitat and hunting plan according to your own personal property goals. Each property has its own unique terrain and lay of the land and each one needs a different strategy. On many occasions there are multiple ways of setting up each individual property. Carefully considering and evaluating each option and then proceeding with the one that will work the best for that situation is our main focus. Once we are on your property for the consultation, we will lay out and discuss food plots, blind setups, tree stands, screening, water holes, scrape areas, pinch points, bedding areas, rut hunting strategies and much more. Our goal is getting your food in the correct areas but then also creating backdoor access for some action-packed rut hunting opportunities. A very key link to creating consistent shot opportunities at mature bucks year after year. The goal that we **want** for your property is to have wildlife not only want to occupy your property but **flourish** and **thrive** on it. The finished plan that you receive after the consult is a waterproof 24"x 36" or 30" x 30" detailed print with color coded areas, including lines and markings that indicate their different meanings. That print then gives you a birds-eye view of the complete technique to use on your property, and it will help you to remember what to work on for years to come. Also included is a smaller hand held print for taking out into the field with you. A Priority List and a Food Plot List are also included with the overall plan. The option of creating a personalized map on OnX. This has been an amazing help to our clients when they are out in the field and executing the plan. If you long to maximize your property, see whitetails thrive on your property, and also have a consistent chance at harvesting a mature buck, give us an opportunity to help you.

To discuss any questions, pricing, or if you would like to schedule a consultation call 330-440-5327



food plot clearing

Where to put a food plot can be the big question if you have a property that is mostly wooded or covered with brush. We can help you decide where to put it, how to effectively shape it, and then also create the food plot to your liking. The main thing we focus on when creating a new food plot is leaving as much topsoil on the plot as possible. That will give you the maximum growing results possible. If enough trees and bushes are available we can use that to build tall screens for access to a hunting spot or edge screening. If the area that you would like a food plot has timber value trees, we have the means of cutting them. After they are cut we have the stumps removed also. Again, our main focus is keeping as much of the top soil in your food plot so that you will have the best chance at having a successful food plot in the end. Another important key feature is cutting deer access trails into the new food plot. This helps to manipulate the deer into accessing the food plot where you want them, making them feel safe and secure.

If you have any questions, need consulting, or want to schedule a project please call Myron at 330-440-5327

food plot clearing: before and after



timber stand improvement (TSI)

Hinge Cutting: Using a variety of hinge cutting techniques, we establish multiple different ways to attract and guide the deer. For a successful hinge cut you do need the correct species of trees like small poplar, elm, hickory, box elder, and white oak to name a few. Keeping some hinge cuts low is very important so that the deer can browse on the new shoots and leaves when they become available when the horizontal hinge stays alive and resprouts. We also keep some hinge cuts higher for the deer to move around and bed underneath. Now having browse and cover, your area becomes very attractive to a whitetail deer. Creating low hinge cuts (cutting at ground to knee height) can help you with blockages to alter deer movement and also screening. Since there is a specific method in choosing where and how to cut and hinge, we can teach you the correct method. If you prefer we can also do the physical work for you.

Select Cutting and Clear Cutting: Clear cutting also has its place in the creation of habitat for wildlife. Clear cutting exposes the forest seed bed to sunlight and gets a complete new regrowth on the forest floor. This includes a lot of much needed forage and woody browse for deer and other wildlife. We focus on a technique called “group opening” when we do TSI. Instead of clear cutting or hinge cutting your complete wooded acreage or bedding area, we focus on smaller areas or spots of TSI, leaving some areas between the “spots” that stay open with an enclosed canopy of bigger trees. This allows deer and wildlife to have more preferred regrowth edges. This will be able to move in and around these pockets freely while browsing and also allows them to bed up against the pockets. Now you have created diversity. We do some jobs with chainsaws and manual labor than some jobs with a large timber cutter. The timber cutter has the ability to cut and drop large unwanted trees in between preferred trees and not likely damage your preferred trees. This technique has become a game changer due to the efficiency this machine allows for us to have. You can now efficiently cut your unpreferred maple stand forest and leave your preferred trees undamaged. Having and using the correct tools and equipment and also keeping in mind the safety precautions to take are very important when doing this type of work.

For more information call: 330-440-5327



food plot planting and maintenance

Food plot planting is a very important key to having a successful whitetail deer herd and then also being able to hunt them. We install and maintain all types of food plots: everything from Fall annual greens, perennials, corn, soybeans, and even Giant Miscanthus for screening. Our process on every food plot is to determine what type of soil we have to work with, what the deer numbers are in the area, and the size of the food plot. From that information we can determine what is the best nutrition to put in the soil and what type of seed to plant so that you can have success at having a food plot on your hunting property. Our main goal is to have food in your plot when the deer crave and need it the most, which is from September to March. We also determine if your plot will need spring and summer food.

To discuss any questions, pricing, or if you would like to schedule a project: call 330-440-5327



switchgrass planting and maintenance

Switchgrass can be a great addition to most hunting parcels by providing screening, travel routes, or a new bedding area. In the coldest weather it provides a great thermal cover for all wildlife. The starting point for a successful planting is to use the correct chemicals at the right time to take care of any weed competition. We plant most of the switchgrass with our no-till drill to ensure that the seeds have an instant seed to soil contact. The most important factor when drilling is getting it at the correct depth since the seeds are so small. We also use the frost seeding method if the soil was properly prepared the previous fall. Switchgrass doesn't germinate until the soil is around 65 degrees, which is usually around the middle to the end of May, and then when it germinates it grows very slowly at first. It takes 2 to 3 years to establish a mature stand of Switchgrass and if properly planted and then maintained, it will last years and years. To maintain the Switchgrass, we either mow or burn it in spring time to take care of any competition that might be threatening it. For more information or seeds—see below.

To discuss any questions, pricing, or if you would like to schedule a project: call 330-440-5327



pond and water hole installation

Water sources are very very important when establishing and maintaining a healthy deer herd. They need water on a consistent basis when the weather turns warm and dry or in the rut when the deer are really moving. An important factor also is that a whitetail deer would rather drink out of muddy or mossy water holes than a clear fresh creek or spring. Having the water hole or pond at the correct spot can then in turn be tremendously effective when it comes to hunting and harvesting mature bucks. One of the services we offer is building small ponds and installing water holes. If the soil, where you want a water hole, doesn't hold water, then use one of the 4 different sizes of Earth Ponds that we offer. These very natural looking fiberglass water holes are a "must have" in cases where a natural water hole doesn't or will not hold it's water. Since they are made out of soil infused fiberglass they do not get muddy on the banks so they do not increase the risk of EHD. You can see the different options of Earth Ponds in our Products Section of this catalog.

To discuss any questions, pricing, or if you would like to schedule a project: call 330-440-5327



invasive specie control

Tree of Heaven?? Russian Autumn Olive bushes?? Honeysuckle?? These are just a few of the life sucking invasives that torment most land managers in today's world. Most invasives were brought into our country for various reasons but are now an incredible nuisance to us and endanger our native habitat that is so vital to our wildlife. These suffocating species grow fast and powerful and they spread with amazing speed. The importance of keeping these under control on your property is high on your priority list. If your property has even a minor infestation of these then jump on them as soon as possible. If your property is really invaded then start chipping away and you will make an impact and be able to improve your future habitat incredibly. It can be a major chore to get these invasives under control on your property. There are government programs to help you with funding and financial recoupment for these projects. We can help you with all questions and can help you through the process of finding the correct scenario that fits you and your property needs.

For more information call: 330-440-5327

- Grapevine & Invasive Specie Control
- Ohio Forest Tax Law
- Environmental Quality Incentives Program (EQIP)
- Current Agricultural Use Value (CAUV)
- Property Line Marking

TREE OF HEAVEN



HONEYSUCKLE



RUSSIAN AUTUMN OLIVE



Nature's Nursery

A COMPANY OF WHITETAIL HABITAT DESIGNS



At Nature's Nursery we have a very important mission; Seeing wildlife thrive on your property. To create the right scenarios for your property we offer many different options. From planting seedlings for future forests and cover, to planting fruit and nut trees for food, to planting trees or shrubs for privacy or looks, we can help you. If you need an opinion on what to plant where, we can meet with you and discuss the best options and scenarios for you. The experience gained from planting thousands of seedlings every year, has given us the knowledge to know which blend of species will thrive in your scenario. If you are interested in government funding such as EQUIP, CRP or CAUV, we will be able to offer you advice which one to use and also lead you through the process. With the opportunity to source thousands of seedlings and trees, at an affordable price, Nature's Nursery can then provide you with any seedlings, shrubs or trees. And if you like, we can also plant and install them for you. We offer fertilizers and nutrition for any specific tree or area. Be it granular or liquid, we will share with you the different benefits of every option and advise you what to put where. We feel every property or scenario's potential is worth maximizing to the fullest, so let us help you achieve your personal goals. Below are some of the options we offer, but don't hesitate to call us for any questions or concerns you might have. If we don't have an answer ready for you, we will get back to you with an answer.

- Seedlings (Any hardwood or evergreen specie available)
- Fruit Trees (Apples. Pears, Persimmon, Chestnuts, Sawtooth Oaks)
- Fruit Tree Packages (Disease Resistant & Late Bearing)
- 3' to 6' Evergreens (Eastern White Pine, Norway Spruce, Arborvitae)
- 3' to 6' Ornamental Trees
- Granular and Liquid Fertilizers (Contact us for info, pricing, and ratios)
- Planting or Transplanting any of the above



DEER ORCHARD PACKAGE \$439.00

- 2 Liberty Apple - 1 Winesap Apple
 - 2 Gold Rush Apple - 1 Trophy Pear
 - 1 Doc's Special Pear - 1 Giovan Pear
 - 1 Deer Magnet Persimmon
 - 1 Meader Persimmon
- (Includes: 10 Fruit Trees with Protectors)**



- Pears (6'-8' potted) \$49.50
- Apples (3'-5' bareroot) \$26.95
- Chestnuts (2'4' bareroot) \$24.95
- Sawtooth Oaks (4'-6' bareroot) \$26.95
- Persimmons (2'-3' bareroot) \$32.95
- Black Cage Combo \$19.95 (with stake & zip ties)
- 5' Tree Tube Combo \$10.95 (with stake & zip ties)

STAGING AREA PACKAGE \$275.00

- 2 Sawtooth Oaks
 - 4 Chestnut Trees
 - 1 Deer Magnet Persimmon
 - 1 Meader Persimmon
- (Includes: 8 Fruit Trees with Protectors)**



whd seeds & products

We at Whitetail Habitat Designs offer a full line of seeds & products for the deer hunter and land manager. Using our experience in doing habitat management and hunting in Ohio and surrounding states, we have been able to narrow down the most needed and useful tools to our knowledge. Our seeds and food plotting products have been proven to work consistently and very effectively in all of Ohio and surrounding states. We have been fortunate enough to have trial and error in most situations possible, however we feel there is always much room to learn and grow in our field of expertise. Having available whatever the land manager or deer hunter needs to establish their property is our number one goal. We also have products available that are not in the catalog so never be afraid to call and ask about any products on the market. Any products in our catalog can be mailed or shipped to any location. Prices do not include shipping and tax.

Please contact us using the following options for more information or to place an order:

Phone: 330-440-5327 (*Call or text*)

Email: whdfoodplots@gmail.com

Mailing Address: 3546 Township Rd 125 | Millersburg, OH 44654

Seeds

- Spring & Summer PerennialsSee Page 13, 20
- Switch Grass See Page 14, 20
- Giant Miscanthus See Page 14, 20
- Fall & Winter Annuals..... See Page 15, 16
- Annual Screening See Page 17
- Spring & Summer Annuals See Page 17,18, 20
- Corn & Beans See Page 19,20

Fertilizers

- Natural Fertilizers See Page 20
- Synthetic Fertilizers See Page 20
- Liquid Lime & Fertilizers See Page 20
- Chemical Sprays See Page 20

Products

- Hand Held Seeders (Battery or crank) See Page 21
- Packer Maxx Cultipacker..... See Page 21
- Sportsmans Calendar, Seedling Auger See Page 22
- Earth Ponds See Page 23
- Deer Feeding & Supplementation See Page 24
- Banks Feeders & Bases See Page 25
- Silo Feeders See Page 25
- Timber Stand Improvement Tools See Page 26
- Cedar Posts & Scrape Branch Holders See Page 26
- Trail Cameras & Accessories See Page 27
- Rocklin Scooter See Page 28

Delivery Available to Any Location!

WHD SEED DEALERS

Charm Outdoors
4432B OH-557
Charm, OH 44617
PH: 330-893-1990

Art Rental & Repair LLC
17266 Harrison Rd
Navarre, OH 44662
PH: 330-663-6463

Dealer Inquiries Welcome!



WHD PERENNIAL CLOVER

WHD Perennial Clover is exactly what the name implies, 100% clover. This is a blend of 7 different clovers and will provide a high protein food source for deer and turkeys from early Spring all the way to the middle of hunting season. The advantage of planting blends is they are more versatile and will thrive in a wider range of conditions and soils making them an ideal choice for most any situation from open fields to shaded areas and woodland trails. This is a great choice for rotational planting with annual blends such as WHD Brassica Blend and also a great choice for frost seeding. Clover adds nitrogen to the soil that is heavily used by many annuals, and frost seeding is an effective method for strengthening an existing food plot. It can be planted with little or no tilling as long as the soil exposure is good and the existing vegetation is eliminated. We have a lot of success with broadcasting the WHD Perennial Clover onto our fall WHD Brassica Blend plots. Then, with a little frost seeding the following early Spring, you have an excellent Spring/ Summer food source the following year.

6 lb - ½ acre bag | 12 lb - 1 acre bag | 25 lb - 2 acre bag | 50 lb - 4 acre bag



WHD ALFA-MAX PLUS

WHD Alfa-Max Plus is a highly attractive perennial blend that is super-packed with protein. It is made up of two different Alfalfa strands that deer absolutely crave: chicory, and a small amount of perennial clover. The chicory is a great deer browse and it helps to keep the moisture in the soil. The clover is to give the plot diversity and to fill in open areas where the soil is not as well drained. It will be most attractive to deer from spring to the first frost. For this blend to reach it's maximum potential, it needs to be planted in well drained soils with plenty of sunshine and a PH of around 6.5. In the Spring, you can plant WHD Alfa-Max Plus by itself or with Oats. Or you can plant it in fall with a lite cover crop like WHD Brassica Blend or Oats. The cover crop will help that the young growth doesn't get too much browse pressure.

12 lb - 1/2 acre bag | 25 lb - 1 acre bag | 50 lb - 2 acre bag



WHD SWITCHGRASS BLEND

Our WHD Switchgrass Blend is made up of 3 different switchgrass varieties. These strands are selected to support each other to create a thermal break that withstands the harsh winds and winter elements that it is bound to face. Using it for bedding, screening, or travel routes, switchgrass is a very versatile product and very durable once it is mature. When using it for bedding areas, the most important factor is that it is one of the best thermal covers available to wildlife. In the hunting season, when mid to late season comes around and the cold winds start blowing, this is the go-to bedding for a lot of whitetail deer and other wildlife. On screening, it is a really nice thick screen but not as overbearing as some of the tall grasses that are available. When planning on planting Switchgrass it is very important to take the correct steps to eliminate any weed competition with herbicides. Weeds are the biggest factor in an unsuccessful switchgrass planting project. Our team at WHD will lead you through the complete process of how to plant and maintain switchgrass successfully.

6 lb - 1 acre bag | 12 lb - 2 acre bag | 25 lb - 4 acre bag



REAL WORLD GIANT MISCANTHUS

One of the tallest screening options available, Real World Giant Miscanthus is one of the best screening options when it comes to a long-term scenario. If you have an area where you need some height on your screening option, Real World Giant Miscanthus is the way to go. It is known to have more leaf cover for a longer time into the fall and into the cold winter than any other Miscanthus.



WHD EARLY SEASON BLEND

WHD Early Season Blend is our own blend of seeds that is a great option to plant around the middle of August and it gives the deer a great candy crop till the first frost. The deer love the late planted Forage Soybeans, Winter Peas, and Winter Oats throughout the early season. These 3 products coexist and grow with each other and do not suffocate each other. We recommend planting it at the rate of 100 to 150 lbs per acre depending on your soil and deer herd numbers. It is then recommended to top-dress this product at the first of September with the WHD Late Season Blend at the rate of 200 lbs per acre. That will give the deer a variety of 3 forage options in early season and then also 3 forage options in late season in the same food plot!

50 lb - 1/2 acre bag



WHD LATE SEASON BLEND

HEAVY BROWSE TOLERANT

WHD Late Season Blend is a mix of Cereal Grains that include Winter Rye (Grain), Winter Wheat and Winter Barley. It is designed to maximize every square inch in your food plot and will be heavy browse tolerant for your farm where you have a lot of deer. If you have a plot that is usually overgrazed or you can't grow enough food for the deer, then WHD Late Season Blend is your best bet to have the max amount of greens. This is an easy-to-grow blend that grows in a variety of soils or low PH soils and it gives your deer herd an excellent green food source through Fall & Winter. It is also a great cover crop option if broadcasted into your already brown soybeans or corn plots. You can plant alone at 250 to 300lbs per acre or top seed into the WHD Early Season Blend at 200 lbs per acre.

50 lb - 1/4 acre bag



WHD BRASSICA BLEND

WHD Brassica Blend is made up of 8 different types of brassicas which include turnips, radishes, rapes, and kale. This blend does best if planted late July to early August in most areas and is an unbelievable fall food source. One very important element that any type of brassica needs is plenty of sunlight. It is not shade tolerant. The large and leafy brassicas will provide tons of nutritious leafy forage that will become sweeter after a hard frost. When the leaves are all gone deer will paw and eat the turnips right out of the ground. WHD Brassica Blend is an easy to grow blend that will draw deer during the hunting season and also provide nutrition during the colder months of late season. We have great success with broadcasting our WHD Perennial Clover blend onto these plots at the time of planting! The clovers will establish under the brassicas in the fall food plot and then will grow in the spring and supply you with a clover plot for Spring and Summer. That gives you a dual benefit at one time of planting!

6 lb - 1 acre bag | 12 lb - 2 acre bag | 25 lb - 4 acre bag | 50 lb - 8 acre bag



WHD FALL BUFFET

WHD Fall Buffet is a highly attractive fall annual that has a wide variety of plants that mature at different times throughout the hunting season. The winter rye and winter wheat will grow first to give the deer instant food that they prefer. After that our blend of fast growing brassicas which include rape, radishes, purple tops & forage brassicas will grow along with the winter peas and clover to keep the deer coming back throughout the entire hunting season. This blend works great for those honey hole food plots that get medium to heavy deer browse. Add in our WHD Perennial Clover Blend at planting to have a nice lush clover plot the following spring & summer. Preferred planting date is late August to early September.

12 lb - 1/2 acre bag | 25 lb - 1 acre bag | 50 lb - 2 acre bag



WHD QUICK CLOVER

WHD Quick Clover is a blend of fast growing annual and bi-annual clovers formulated to provide a cover crop for any plot that you intend to plant a Fall food source such as WHD Brassica Blend, WHD Fall Buffet, and WHD Early Season Blend. The WHD Quick Clover can be planted in the Spring and then is plowed under as "Green Manure" when you are ready to plant your Fall plot. When the clover is plowed under, the buried plants will act as green manure for your plot. As the plants decay they will provide beneficial organic matter for your soil along with other much needed nutrients. WHD Quick Clover is made up of a lot more red clovers than the WHD Perennial Clover has. So it is also a really good mixture for your Spring Turkey plot.

6 lb - ½ acre bag | 12 lb - 1 acre bag | 25 lb - 2 acre bag | 50 lb - 4 acre bag



WHD QUICK WALL

An incredible quick growing, annual screening product, WHD Quick Wall is a blend that is easy to plant and can help you get up to 12' tall screening the first year. It can be used in many different scenarios like screening your food plot from the road or neighbors, creating a pinch point in your food plot and most importantly hiding your access to and from your blind or treestand. This is a great product to plant alongside your permanent screening option, like switchgrass or miscanthus, for the first couple years while you wait for those perennials to mature. WHD Quick Wall is made with a blend of products that are designed to help and support each other in withstanding the wind and elements. To assure yourself of the best results on getting a good screen, it should be planted at least 15 feet wide and needs plenty of sunlight and fertilizer so it stays sturdy and resilient. If you need a screen in one year, WHD Quick Wall will do the job for you.

12 lb - 1/2 acre bag | 25 lb - 1 acre bag | 50 lb - 2 acre bag



WHD SOIL BOOST

WHD Soil Boost is a blend of Buckwheat, Oats, Sunhemp, Nitro-Radish, a small percentage of Rye Grass and 3-Fast growing Annual Clovers. Soil Boost was designed to plant into bare soil from early spring to early summer to help with soil erosion and help to build your nitrogen and organic matter within the soil. This blend will help to boost all your natural values while still providing a great summer food source to the deer, turkeys, and other wildlife before planting your fall food plot. WHD Soil Boost works great for newly created or cleared food plots due to most of the products having a really fast establishing root system to stop erosion. This blend does best with plenty of sunlight and can be planted with a no-till drill or by working the ground, spreading seed then using culti-packer or drag to get a good seed to soil contact. So, if you have a freshly cleared food plot or if your existing plot just needs a boost, WHD Soil Boost is a do-it-all for you.

25 lb - 1/2 acre bag | 50 lb - 1 acre bag



WHD TRAIL GREENS

WHD Trail Greens is your ultimate shade tolerant blend to be broadcast onto any of your ATV/Driving or logging trails. It is a quick germinating blend so it will help to stop erosion as quickly as possible. Therefore you can help prevent those major ruts in your access paths. WHD Trail Greens is also a really good green cover option if you have a little area in the woods like around your pond/water hole or in a WHD rut hub. To create WHD Trail Greens, the correct blend of grasses and clover were hand picked to be shade tolerant and withstand heavy traffic of your access paths. This blend will grow in most soil types and conditions. It does the best if planted in spring or fall.

25 Pound bag | 50 Pound bag



NUTRI-CRAVE HI OIL CORN

Real World Wildlife Products has tested numerous corn varieties over the past decade looking for a variety that would stand out from other varieties in terms of nutrient content/attraction, and compliment our soybeans. Finally, it has been found! The "Nutri-Crave" corn has higher levels of all major nutrients found in corn and also attracts hungry deer better than any other corn that has been tested. In 2020, Nutri-Crave 109-day corn had 11.12% protein and 12.97% fat. Corn from a nearby ag field tested at 6.86% protein and 3.86% fat. Real World's Nutri-Crave corn also had better figures for phosphorus, magnesium, potassium, sulfur, zinc, iron and manganese. Another huge advantage is in total calories, where Nutri-Crave corn has 225% more calories than the same volume of typical field corn. Just imagine what this means to deer feeding on Nutri-Crave corn during the winter! Most importantly, deer showed a very strong preference to Nutri-Crave corn compared to all other varieties tested. Real World's Nutri-Crave corn is non-GMO, (at this time, we do not offer this in the Roundup Ready variety). If you grow corn in your food-plots or for livestock feed, you really need to try Nutri-Crave corn!

26,666 Kernel - 1 acre bag | 80,000 Kernel - 2 1/2 to 3 acre bag



REAL WORLD GEN 2 SOYBEANS

Real Worlds new "Generation-2" soybeans is a blend of 4 different soybean varieties with maturities ranging from 4.0 to 5.4 and are better for wildlife food plots than other soybeans for these reasons:

- They produce a tremendous amount of forage and grain to feed your deer throughout the entire hunting season. Forage soybeans often die and provide nothing after the first frost.
- They are shatter resistant, meaning the soybean grain will stay within the pods where deer can readily consume it.
- They are higher in oil content than most other soybean varieties. High-oil soybeans are more attractive to hungry whitetails and provide higher levels of important nutrients.

The Real World Gen 2 Soybeans are also "glyphosate tolerant" meaning that you can spray glyphosate herbicide (Roundup) right over the top of your soybean plots to keep them weed free.

50 lb - 1 acre bag

additional seeds

- **Real World Switchgrass**

10 Pound bag | 50 Pound bag

- **Conventional Corn (50 Pound bags)**

- **Alfalfa - Roundup Ready (50 Pound bags)**

- **Enlist Soybeans (50 lb - 1 acre bag)**

Being Roundup and 2-4D tolerant, these beans are a must if you have problems with Mare's Tail, Water Hemp and other problem weeds

- **Oats (50 Pound bags)**

A great cover crop option when planting perennials and also an attractive green source in early season

- **Buckwheat (50 Pound bags)**

A great summer cover crop to build your soil for your fall food plot

- **Winter Rye (56 Pound bags)**

(HEAVY BROWSE TOLERANT) An excellent green source from Fall to Spring. Great for Small Plots, Low PH soils or more shaded areas

- **Winter Wheat (50 Pound bags)**

(HEAVY BROWSE TOLERANT) An excellent green source from Fall to Spring. Great for Small Plots, Low PH soils or more shaded areas

fertilizers

SOIL SAMPLES \$45.00

SYNTHETIC FERTILIZERS

- **19-19-19 or 12-12-12 (50 Pound bags)**

Great for any fall food plot
Common rate: 300 lbs per acre

- **5-12-42 (50 Pound Bags)**

For clover, alfalfa, and soybeans
Common rate: 300 lbs per acre

- **46-0-0 UREA /Nitrogen (50 Pound bags)**

Knee high corn & sorghum: 100 lbs per acre

NATURAL FERTILIZERS

- **Custom Fertilizer Blend**

Based on Soil Sample

- **Bet-R-Yield (50 Pound bags)**

Use on Corn, Brassica or any fall food plot
Common rate: 300 lbs/acre
Max Potential Rate: 400 lbs/acre

- **Nat-R-Gro (50 Pound bags)**

Use on Soybeans, Clover, Alfalfa
Common rate: 300 lbs/acre
Max Potential Rate: 400 lbs/acre

- **Hi-Cal Pelletized Lime (50 Pound bags)**

LIQUID FERTILIZERS & LIME

- **Plot Doctor (Liquid Lime)**

Rate: 1 gal. per acre
(15 to 20 gal of water per acre)

- **All Purpose Soil & Foliar**

Rate: 1 gal. per acre
(15 to 20 gal of water per acre)

- **Liquid Nitrogen**

Rate: 1 gal. per acre
(15 to 20 gal of water per acre)

herbicides

- **Clethodim Spray**

This is a postemergence grass herbicide and will kill grasses only and will not kill any broad leaf plants.

- **Simazine Spray**

2.5 qts./acre for corn. 2 qts./acre for Quick Wall. 1 qt./acre for switchgrass after May 1st.

- **24-D Spray**

2 pints to the acre.

- **Glyphosate (Round-up) Spray**

2 qts. to the acre.

- **Crop Oil Spray**

To tremendously enhance the effectiveness of any chemical. Rate: 1 qt. per acre (apply last when mixing with chemicals).

- **Choice Trio Spray**

- **EnList Duo Spray**

For EnList Soybeans pre-emergent
Rate: 2 Quart per acre

- **Lexar Spray**

For corn pre-emergent
Rate: 2.5 Quarts per acre

- **Princep 4L**

For Non- GMO Corn
Add 1 Quart per acre to Lexar

- **Fierce XLT**

For Gen 2 Soybean Pre-emergent
Rate: 8 Ounces per acre

HOOYMAN 24V SPREADER - \$295.00

Cranking seed out by hand is in the past! With a very comfortable harness system, the Hooyman 24V Battery Spreader makes spreading faster, easier, and comfortable. The adjustable throttle allows you to set the pace and the spreading pattern is as consistent as possible. Also with the hard plastic design and the turn on cap/lid, the risk of spilling seeds is majorly reduced. With a continuous run time of 3 hours you can finish most jobs on one battery charge. Add this convenient tool to your food plot arsenal.



THE HOOYMAN HAND CRANK VERSION - \$175.00

The same consistency and comfort as the one above but just no battery power.



CHAPIN HAND SEEDER - \$45.00

This basic, very durable hand seeder holds up to 25 pounds and will be able to evenly distribute any type of seed.



PACKER MAXX CULTIPACKER

The Packer Maxx cultipacker is a foodplotters favorite due to its capability to be pulled by an ATV or a tractor. Available in 4' or 6' tow-behind or in 3-pt-hitch models, these very durable cultipackers are quickly becoming the favorite cultipacker within the habitat improvement industry. The very durable, 1/4" thick Roto-Molded Polyethylene drum will endure any terrain, rocky or sandy. Depending on your ATV or tractor, the drum can be filled with water or sand to gain the preferred weight you are wanting. A wheel kit is available to transport your new unit if your scenario requires it.



3 Point Hitch Model



4' Tow Behind



Wheel Kit Option

PMX4HD: 4' TOW BEHIND CULTIPACKER: \$949.99

PMX6HD: 6' TOW BEHIND CULTIPACKER: \$1,499.99

WHEEL KIT CONVERSION : \$199.99

OHIO SPORTSMAN'S WILDLIFE CALENDAR - \$18.00

Did you ever wonder when the moon triggers wildlife movement the most? With this little booklet hunters and fishermen can now see all the major and minor wildlife activity times that are activated by the moon. It has been proven over and over in history that the moon can play a major role in all wildlife activity including fish and birds. With the information in this book you can now narrow down the dates and times that mother nature will be urging everything to move. Along with all the moon times and phases, this booklet allows you to keep a record of the weather, wind direction and speed, barometer pressure, temperature high and low, sunset and sunrise and also notes of each day. Plan your hunting or fishing days ahead of time with this handy little book that will fit easily in your backpack or any gear bag.

For more information call 330-440-5327
Shipping available anywhere.



THE SEEDLING AUGER - \$25.00

Have a lot of seedlings or bulbs to plant?? Attach this auger to the front of your battery operated drill and be very efficient when doing all of your plantings. This handy 24" long auger drills a 2 1/2" to 3 1/2" hole depending on how you twist and operate the drill.

For more information call 330-440-5327
Shipping available anywhere.



RUSTIC FRAME FOR WHD MAP - \$250.00

Hang your WHD Property Management Map on the wall with style. Made out of roughsawn maple and stained with a natural brown color, it is the perfect neutral look for your home or cabin.

For more information call 330-440-5327



EARTH PONDS

Water is absolutely essential for a successful deer hunting and wildlife property. One of the biggest challenges that a land manager faces is if his preferred water hole spot doesn't have soil that will hold water. The solution is the Earth Ponds. Constructed of heavy-duty fiber glass and infused with dirt and other natural minerals straight from the Earth, you'll be able to attract more wildlife than ever to your hunting spot. These ponds are as natural looking as any man made product is possible to make. They are designed with a rough surface and slanted sides to allow the deer to actually walk right into the pond if he so desires. These slanted, rough sides also allow small critters to drink and escape safely from the water source. Plus these sides will never get muddy so therefore it decreases the risk for EHD infection at your water holes. You will be able to manipulate deer movement in a major way when installing one of these Earth Ponds at your hunting spots.

For more information call 330-440-5327



MEDIUM EARTH POND

47" x 47" x 10" deep - 50 Gallon



LARGE EARTH POND

74" x 47" x 10" deep - 80 Gallon



X LARGE EARTH POND

92" x 47" x 10" deep - 120 Gallon



MEGA EARTH POND

92" x 92" x 13" deep - 250 Gallon



DEER CANDY

We believe it is very important to give deer a variety of products in a feed when we are feeding them through the fall and winter. Deer Candy gives you that variety. Deer Candy is made of shelled corn, split peanuts, sunflower seeds, roasted soybeans, and then topped off with apple flavoring. Now they have a buffet when they want to eat. It gives them a very much needed and healthy balance of protein, fat, and fiber. Since it does not have gummy or sticky texture, Deer Candy will work in any feeder. So try our affordable blend when you decide to feed your deer.

GUARANTEED ANALYSIS

Crude Protein.....11%

Crude Fat.....8%

Crude Fiber.....7%

Deer Candy is available for pickup or delivery through Stony Hill Mixing (330-674-4964) or through us for after hour pickup (330-440-5327). Call us for more information.



ALFALFA DEER HAY

Give your deer herd an amazing boost with protein and fiber with the supplement of pure alfalfa hay. When given the option, deer absolutely love these sweet smelling greens. For the overall health of your herd, it is so critical to feed your deer more than just corn or feed in those dire winter months. What we have learned is you will have the best results when you use the highest testing alfalfa that is available. That is why we use the western alfalfa hay from Buckeye Hay Company who take pride in testing all of their hay and being able to give you the comfort of knowing the actual test results.

For more information call 330-440-5327



THE BANKS FEEDER & PORTABLE BASE

- 600 LB or 300 LB Feeders
- Black Metal Base that makes the Banks Feeder portable
- 4x4 or 6x6 Post cut to correct size available
- Metal Coon Pipe (makes the feeder coon proof)
- Includes lags to insert into post and 2 ground stakes for stability

AVAILABLE AT

Charm Outdoors (Charm, Ohio) 330-893-1990

David Troyer (Mt. Hope, Ohio) 330-763-4992

Miller Gun (Sugarcreek, Ohio) 330-852.2355



SILOTM
THE INVISIBLE DEER FEEDER



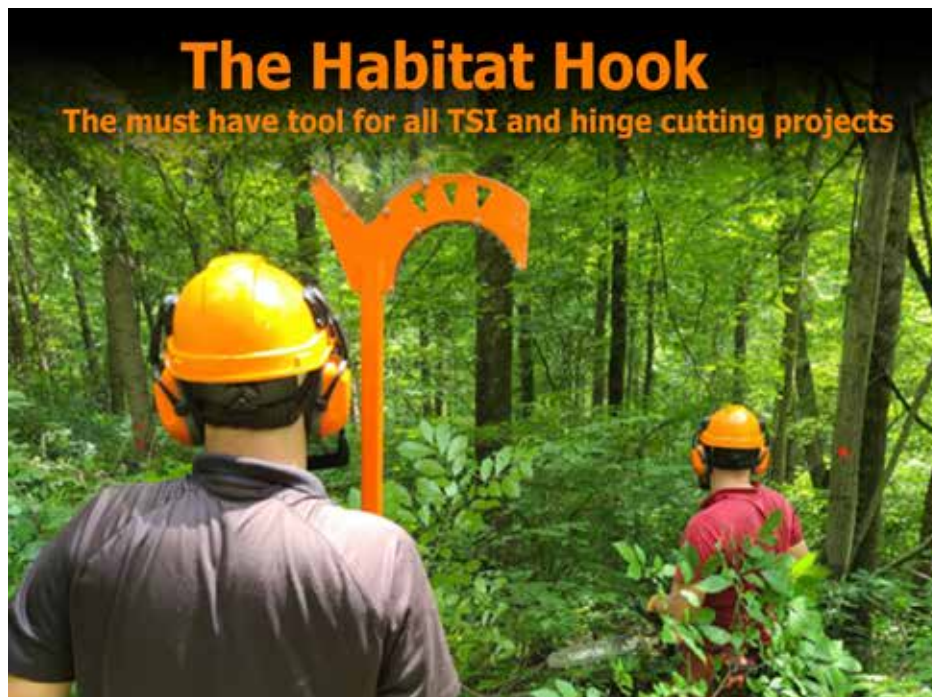
- **CONCEALED**
invisible to the deer
less intrusive to fill

NOW AVAILABLE
DELIVERY and
INSTALLATION

- **CONTROLLED**
any time, any amount timer

- **CAPACITY**
large capacity, only fill twice a season
saves on corn, trips, pays for itself





ALUMINUM HABITAT HOOK - \$325.00

- 3 length adjustments (7', 9', 11½')
- Square tube design with fast engaging snap button length adjustment
- Very light weight at only 7½ lbs!
- Made from 6061 Aircraft grade Aluminum, won't corrode or rust
- 304L Stainless Steel, laser cut teeth designed to bite into trees
- Stainless Steel fasteners used to fasten teeth

For more information call 330-440-5327



CEDAR SCRAPE POSTS - \$30.00

BRANCH HOLDERS - \$15.00

- Attract bucks within range in food plots
- 6" to 8" Cedar Posts
- Branch Holders are adjustable (Includes screws)

For more information call 330-440-5327



SPARTAN CAMERAS

A very high quality camera is a very helpful tool to the deer hunter and land manager. The Spartan cameras fit that description plus more. Spartan Cameras offer a variety of cameras with the Spartan GoLive Wireless Camera being the most popular due to the live streaming capability followed by the Spartan GoCam, a more economical route to go. Available also is the Spartan Eclipse which is not a wireless camera but just a high quality, still camera to hide away in the back depth of your property for quiet year round inventory.



**SPARTAN
GoLIVE**

LIVE
LIVE STREAMING

ON-DEMAND VIDEO & IMAGE

ANTI-THEFT GPS

Spartan GoLive
\$275.00



**SPARTAN
GoCAM**

INFRARED FLASH
Stealth Night Vision

WIDE RANGE
Detects up to 80 feet

DURABLE BUILD
Impact resistant & waterproof

Spartan GoCam
\$175.00



ECLIPSE

Spartan Eclipse
\$135.00

32 GB SD CARD - ULTRA SANDISK

- Class 10, U1, UHS-1 Rated – Minimum 10MB/s | Maximum 120MB/s
- Holds an estimated 8,620 JPG Photos or 595 RAW photos
- Roughly 425 minutes of HD video or 85 minutes of 4k video

\$12 per Card

(Bulk Option 10 Cards
or more \$10 Per Card)



TRAILMASTER VOLTZ OUTDOOR BATTERY

The Trailmaster Voltz external battery is a very versatile and compact battery that is compatible with most 12 volt and 6 volt trail cameras like Spartan, Wise Eye, Tactacam, Covert, Moultrie, Browning and many more. Having a port for each voltage makes this the ultimate “one size fits all” battery in the trail camera world. It is constructed of a heavy duty plastic so there is no need for any box or protection for this battery. Simply hang up your trail camera, connect the Trailmaster Voltz battery and you are good to go.

- 1 year warranty
- Includes Rope with Ratchet
- Includes charger



**Trailmaster Voltz
Battery**

\$85.00



Battery Tester

\$8.00





ROCKLIN S1 SCOOTER

BUILT FOR ALL TERRAIN

CONQUER THE WILD

with the Rocklin S1 Scooter, the ultimate off-road machine for hunters. Engineered for rugged terrain, it delivers unmatched durability and performance, ensuring you're always one step ahead in the hunt.

Engineering Excellence

BUILT IN THE USA



FEATURES :

High Torque at Low Speeds

4500W peak power with dual geared hub motors.
Designed for off-road use – think Jeep, not sports car.

Top Speed: 20 MPH

Safe and controllable in rough terrain.

Range: Up to 40 Miles

20-25 miles in off-road conditions.

3 Power Levels

Adjustable for any terrain or need.

16x3.5 Inch Tires

Maximize torque and ensure stability.

Compact for Transport

Folding handlebar for easy storage.

Reliable Braking

Regenerative and hydraulic disc brakes for quick stops.

For more information call 330-440-5327

ATV/UTV DRY MATERIAL SPREADER - \$650.00

The ATV/UTV Dry Material Spreader with Integral 2" Receiver Hitch Mount easily slides into standard 2" (Class 3) receiver on pickups, UTVs and ATVs. Attach receiver mount to the dry material spreader frame. Then secure receiver mount to vehicle receiver with 5/8" retaining pin, hook up power cables and you are ready to spread. Easily disperses seed, dry granular fertilizer, pesticides, ice melt and other dry materials. The 12 volt motor with variable speed control allows you to vary the spread width from 5 feet to 45 feet. Versatile and easy to use, the ATV/UTV Dry Material Spreader features a 2.2 cubic foot capacity poly hopper that holds up to 145 lbs of material and stainless steel radial 6 blade fan. Included rain and dust cover securely fits around the hopper to protect dry materials from adverse elements. The material spreader applies product evenly over the entire yard or surface, resulting in less product waste, less time and less effort. The best easy-to-use spreader for medium-size to large jobs in parks, parking lots, lawns, pastures, ball fields, acreages and small farms.



NEED A QUIET METHOD TO CROSS A FENCE?

**THIS TREATED PINE FENCE
LADDER IS THE TICKET**

**PRICE
\$195**



CALL 330-440-5327



2024-25 season success stories



2024-25 season success stories



2024-25 season success stories



2024-25 season success stories



01/12/2024 - 6½ YEARS OLD



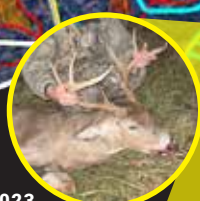
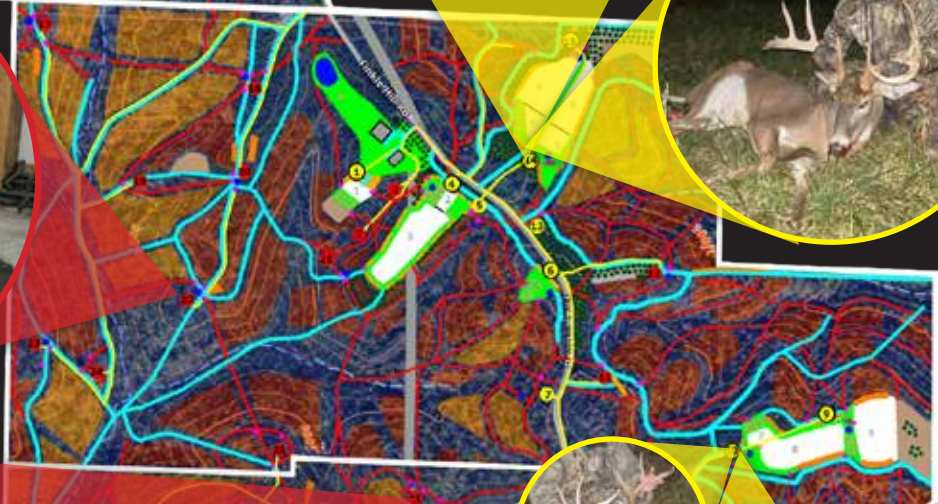
10/01/2024
4½ YEARS OLD



11/27/2023
6½ YEARS OLD



11/13/2024 - 6½ YEARS OLD



12/2/2023
5½ YEARS OLD



10/19/2024 - 5½ YEARS OLD



YOUTH HUNTER - 3½ YEARS OLD

customer feedback

We have a piece of property that we have been hunting since 2019. When we first bought the property there were no food plots at all and bedding areas were very limited. We did some food plots on our own the next couple years and had some decent early season action. We knew something was not right though as come Dec 1 it seemed like the switch got flipped and there was not a single deer left on the property.

In the Spring of 2021 we brought in a crew and did some hinge cutting and worked on creating travel routes etc. That did make a big difference and I was fortunate to harvest a 178" buck on Nov 4, 2021. However come Dec 1 it was the same old story again with no deer on the property.

That all changed in 2022 when we brought in Whitetail Habitat Designs. One of the first things they pointed out was the need for more food and lots of it. There was also the need for more bedding areas and better access routes to some of our kill plots.

The WHD crew came up with a plan for the property with a ton of food and switchgrass to create bedding areas and access paths. Marion's Big N Beastly plots were knee high going into fall and the deer love them.

2022 was by far the best hunting season we have ever had. We had multiple mature bucks roaming the property and the deer are hitting our food plots every day even into January.

If you don't want mature bucks and lots of deer on your property I would advise you to steer clear of the WHD guys!!

Mark Mast



LeAnne with her 171" buck
harvested on 11.19.22



Joel with his 128" 8 pt on 1.7.23



Micah (5) with his first deer on 11.26.22

Thanks WHD for getting our set-up from good to great!! -Jeff Miller (2023-24)





OUR PARTNERS

People we work with hand in hand



KAUFMAN
REALTY & AUCTIONS



KAUFMAN
TROPHY PROPERTIES

YOUR RECREATIONAL PROPERTY EXPERT

SELLING

- Listing or Auction Method
- Reliable Service
- Give Your Property the Attention it Deserves

BUYING

- Determine the Needs of Your Next Property
- Locating the Property
- Negotiating on Your Behalf

JUSTIN MILLER | REALTOR® | QDMA STEWARD | (330) 763-3759



EQUIPMENT



HOOP BUILDINGS



INTRODUCING KIOTI TRACTOR

Ackerman's Equipment & Rental LLC • PO Box 126 • Mt. Hope, Ohio 44660 • 330.674.0495
Conveniently located across the road from the Mt. Hope Auction. or online at www.ackermansequipment.com



WHD Partners

DOUBLE YOUR HARVEST

Combine timber and habitat management



**CHAINSAWS &
BIG BUCKS**
BETTER TIMBER. BIGGER BUCKS.



Hillcrest
L U M B E R L T D.

Fine Hardwoods & Woodland Management

Contact David Hershberger, Timber & Deer Specialist
david@hillcrestlumber.net | 330-763-1932 | HillcrestLumber.net



REVEAL
CELLULAR CAMERA
TACTACAM

WiseEye
TECHNOLOGIES



LOWDOWN



Neck Gaiter



Fanatic Pack



Trucker Hat



Face Mask



Beanies



Quietest Pack on the market



S I T K A

Beanies



Gaiters



Hats



Gloves



Stratus Series



Equinox Series



Traverse Series



Fanatic Series



Equinox Guard



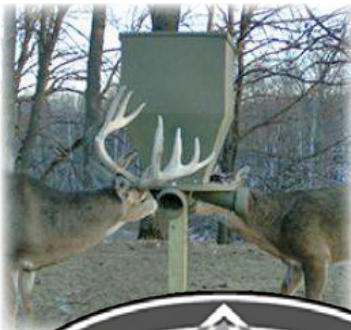
Timberline Series



Kelvin Aerolite



Mountain Series



BANKS
Outdoors



150 lb.



300 lb.



600 LB.

KBO CRUNCH
NON GMO
DEER FEED



330.893.1990

4432B State Route 557, Charm, OH 44617

Mon: 8-7 • Tues, Wed, Thurs: 8-5 • Fri: 8-5:30 • Sat: 8-12 • Closed Sun

Marty J. Hershberger, Owner



whdfoodplots.com

D&M HUNTING BLINDS LLC

www.dandmhuntingblinds.com

330.275.0778

Mailing: 4267 State Route 557, Millersburg, OH 44654



Satisfaction Guaranteed!



6x6 Hunters View Interior



6x8 Hunters View Interior



6x8 Plot Watcher Hunters View Interior



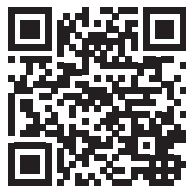
6x6 Hunters View



6x8 Hunters View



6x8 Plot Watcher Hunters View



CHECK OUT OUR WEBSITE!

We have the highest quality materials.

PICKUP & DELIVERY AVAILABLE.

Visit our display blinds at our new location on State Route 39 just east of Berlin!

3976 State Route 39, Millersburg, OH 44654

RENTALS

EQUIPMENT

Dozer D4 CAT
Skid Loaders
Mini Excavators
Tractors
Trailers

ATTACHMENTS

Skid Loader Brush Mower
3 Pt. Tiller
3 Pt. Brush hog
Buckets
Forks
Grapples

**PICKUP & DELIVERY
AVAILABLE**



MID-OHIO

SERVICE & REPAIR

6128 OH 39
Millersburg OH
44654



330.674.0456



SALES & SERVICE

BUY • SELL • REPAIR

EQUIPMENT

Attachment dealer of:

LAWSEN
EQUIPMENT

Jenkins
IRON & STEEL

KingKutter
INCORPORATED



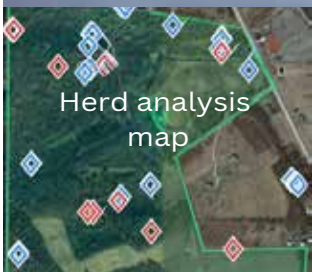
330.473.0322

THERMAL DRONE SERVICE



- Deer recovery.
- Deer herd analysis/buck-doe count.
- Lost animals.
- Aerial videos/ real estate

Brian Raber
330-204-8227





**OTHER TRUSTED
SERVICES & PRODUCTS
TO HELP YOU**





**Ascent
Toyhauler**

**For Sale or Available for Rent
Great for Camping or Hunting Trips!**



330-275-8480

BEAR TRACK™
ALUMINUM TRAILERS



**All Aluminum with Torsion Axle
5 Year Structural Warranty**



**Gingerich
TRAILER SALES**

**5815 SR 39 • Millersburg, OH
330-674-4441**

Tine Dog
Dog Training

*Shed Hunting
Wounded Deer
Waterfowl
Uplandgame*

James Beechy
Fresno, Ohio
330.407.5884

**Contact us for available puppies
and upcoming litters!**

Sheds & Chandeliers

***Do you have sheds that you need found??
We will find them for you***

Specializing in finding sheds & building chandeliers

Call for more information:

PH: 330-778-1300

Email: ridgeview@upwardmail.com

Contact us also for available or upcoming litters



whdfoodplots.com



**Serving The Area
For Over 30 Yrs.**

FREE Estimates

Locally Owned & Operated

**Buyers Of Standing Timber
Deal Directly With Sawmill**

www.kbforestry.com

Call or Email Marion

330-204-9511

marion.kbforestry@gmail.com

4865 County Road 19 Millersburg OH 44654



Solar solutions...

for your Hunting Cabin.



Solar Panels
Pole Mount or
Roof Mount



The Power Barn*



The Power Box*



Lithium Batteries



Wall Mounted System



Generators



Delivery

Connect
ENERGY LLC

Safety + Trust = Peace of mind!

Installation and service available.

*Pre assembled ready to enjoy systems.

☎ 330.231.4763

📍 4227 SR 557 Millersburg OH 44654

✉ connectenergyllc@gmail.com



whdfoodplots.com

mahindra TRACTORS

THE **ALL IN ONE TRACTOR**
FOR YOUR FOOD PLOT AND
WOODLAND IMPROVEMENT

OFFICIAL
TRACTOR
OF TOUGH

IMPLEMENTS FOR ANY JOB!

COME CHECK OUT OUR FULL LINE UP,
WE HAVE THE RIGHT SIZE FOR YOU.

*Available 0% APR financing on purchases of selected new Mahindra tractor models from participating dealers' inventory on qualified purchases through Mahindra Finance US LLC. A down-payment may be required for selected tractor models. Financing information is made available by Mahindra Finance USA LLC for discussion purposes only and is not a commitment to finance any transaction. The information provided is not intended and should not be construed as legal, accounting, or tax advice. All financing is subject to credit review and approval and other terms and conditions and is at Mahindra Finance USA LLC's sole discretion. Offer available for a limited time only and subject to change without notice.

THE WORLDS #1 SELLING TRACTOR

CALL 330-893-3033
4741 SR 557, MILLERSBURG, OHIO 44654
MON - FRI: 7 AM TO 5 PM | SAT: 7:30 AM TO 11:30 AM





THE INSULATED METAL BARN COMPANY

12208 Gunther-Miller Rd
Fresno, OH 43824
330-312-4859

INSULATED CABINS



Dealer Inquires Welcome

HUNTING BLIND

- 1 $\frac{3}{4}$ Insulated walls and roof
- Scent Proof
- Mice Proof
- Woodpecker Proof
- Double Pane, Tinted Whisper Track Windows
- Side Entry Doors
- Bottom Entry
- EZ Post Brackets
- Metal Exterior



WOW! I can't even make a dent in this blind!

Yeah, the only thing these are good for is sharpening my teeth!

- 5' 6" x 5' 6" ... \$1,900
- 5' 6" x 7' \$2,200
- 6' x 6' \$2,600
- 8' x 8' \$3,000

BUYERS OF STANDING TIMBER



Specializing in Pine and White Oak

Call our timber consultant
for a free timber evaluation

419-685-8634

*YOUR WOODS to
SOMEONE'S
DREAM HOME!*



whdfoodplots.com

BUILT ON THE ROCK.... PURSUING THE VISION



***CUSTOMIZABLE OPTIONS AND INSTALLATION AVAILABLE
ALLOW US TO HELP YOU FIND THE PERFECT FIT
FOR YOUR APPLICATION***



Any Wind, Any Weather, Hunt Together



COMFORTABLY 2 / EASILY FIT 3

**CONTACT
INFO**

 (330)-808-9848
 bouldervisionllc@gmail.com
 bouldervisionllc.com

Follow Us On



Key Features

- 7 x 7 x 7' Six Sided Blind
 - Shoot Standing or Sitting
- 10' Elevated Platform
- Customizable Entry
 - Stair Way / Rear Entry
 - Ladder / Bottom Entry
- 8 Double Paned Shooting Windows
 - Tinted or Clear
- Recessed Windows To Conceal
- 3 Peep Windows
- Scent Tight
- Carpeted Sound Dampening Interior
- R9 Insulated Ceiling



Construction and Excavating Equipment Rentals

5890 County Road 207

330-674-4849

Millersburg Ohio 44654



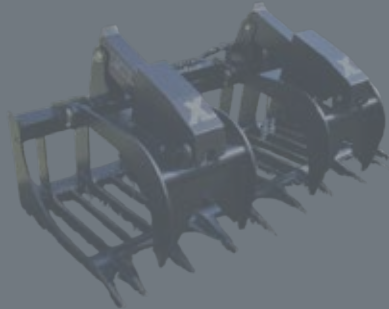
- Dozers
- Excavators
- Compactors
- Track Loaders

- Mini Skid Loader
- Man Lifts
- Scissor Lifts



Skid Loader Attachments

- Log Grapples
- Brush Cutter
- Augers
- Hyd Breaker



- Trencher
- Box Grader
- Harley Rake
- Rock Hound



Pick up and delivery available on all
Rental equipment.

We also offer custom trucking.



www.troyerequipmentltd.com



GEAR UP FOR SUCCESS

HUNTING BLINDS DESIGNED FOR EVERY SEASON

**6 AND 7 FOOT BLINDS
BOTTOM AND SIDE ENTRY**

DELIVERY AND INSTALLATION AVAILABLE

- super tight design - for warmth and scent control
- insulated and fully carpeted - brings a sleek look and is very sound deadening
- bottom entry - easy entry with large opening to help keep blind tight
- ten large, whisper quiet windows - extreme visibility in all directions
- double pane windows - less fogging, greater R value
- windows are tinted - you can see out, trophy can't see you
- full 7' ceiling - all the head room you ever need
- painted LP smart side - long lasting durability
- built in pockets for 4x4 posts
- extremely fast and simple setup - screws pre-started in panels
- one clear window - for better visibility in low-light conditions



"NXT GEN hunting blinds are my new favorite hunting blinds. I got one to see how I liked it and after the one night hunting in it, I obsessed with them. I had deer all around me including a very mature buck directly down wind at 20 yards for 35 minutes and not one deer had any idea someone was around. It is a very tight, quiet, spacious blind. And they are very compound bow hunter friendly."
-A.H.

WE'RE EXCITED TO INTRODUCE YOU TO NXT GEN HUNTING BLINDS... BUILT BY HUNTERS, FOR HUNTERS.

Our blinds are designed to cater to the needs of the vertical slide, tinted, double-pane windows; this blind brings you extreme visibility. Our blinds are insulated and fully carpeted which deadens any sound you happen to make. With insulated ceiling covered with a very strong PVC commercial roof membrane and bottom entry, the NXT GEN Blind will give you the ultimate hunting experience even in Mother Nature's harshest weather conditions!

MARTY J HERSHBERGER

8886 TOWNSHIP ROAD 614 | FREDERICKSBURG, OH 44627





CONTACT MATTHEW SHETLER: 330.204.4218

STANDARD MODEL

- 6' x 6'
- 6-sided
- metal Siding (*prevents rot & woodpecker holes*)
- 6 double-paned hinged windows (*prevents fogging*)
- trap door
- carpet floor

- 1 (1" x 6") Shelf
- air tight
- dark brown exterior with black trim
- blackboard along inside for sound earier and scent proof
- Elevation: 6' 8' 10' or 12'

OPTIONS:



Real Tree Edge Camo Metal Siding



Side Door



Additional Stationary Windows

**Free
DELIVERY
& SETUP!**

FEED DEER, NOT RACCOONS



Our gravity-fed feeder keeps critters at bay and deer fed!

Local Delivery Available

CENTRAL OHIO TAXIDERMY LLC

2737 TR 181, Baltic, Ohio 43804 | 330-473-8361



STEEL BRIDGES

Specializing in 20'-60' Bridges.



Unique **STRUCTURAL DESIGN** to
MAXIMIZE STRENGTH.

Engineer Stamp Certified!



CHOOSE YOUR PACKAGE

*All our blinds come
with carpet flooring
and include a bag
window system that
is not only quiet but
also ensures our
blinds remain airtight.*

330-521-8202

PACKAGE 1 6x6 square blind equipped with four operational double-pane windows and an extra twelve windows, providing a more spacious hunting experience. Includes corner shelves and shooting rests for added convenience.

PACKAGE 2 6x6 octagon blind featuring eight functional double-panel windows along with four additional windows at the top. It offers nearly 360 degrees of shooting availability.

PACKAGE 3 6x8 blind featuring six operational double-pane windows, completed by twelve stationary single-pane windows, corner shelves, and shooting rests.

Every blind incorporates innovative technology, featuring a slide-up silent window system enhanced by bubble wrap with an impressive R-value of 7. Additionally, it showcases smart siding all around, providing a unique and cutting-edge appearance that surpasses most other products in durability.



Delivery & Installation Available

BEACHY'S HUNTING BLINDS | 3832 TOWNSHIP ROAD 371 | MBG, OH 44654

EXPERIENCE UNPARALLELED VISION



WITH THE NEW STRONGER
6X6 MIRAGE FLOOR PLAN STYLE!

2025 MIRAGE BLIND

UNLIMITED VISUAL ACCESS TO NATURE WHILE HUNTING

- All-sliding double pane windows
- Scent tight construction
- Modular build
- IMAX see thru walls



A DEADLY DUO

2025 BUCKEYE SEAT

**ABSOLUTE QUIET ACCESS TO
ANY WINDOW ANY ANGLE**

*Don't have a dealer near
you for the Buckeye
Seat? We ship!*



ORDER YOURS TODAY!

(574) 526-0872 | lifetimemfg@gmail.com
72945 CR 17 | Milford, IN 46542

LIFETIME
MFG

TREELINE LUMBER, LLC

Use wood. It's renewable.

LOOKING FOR BIG BUCKS?

Providing a habitat can be a profitable
adventure, and we can help you!

At TREELINE LUMBER, LLC, we buy standing
timber and create habitats for wildlife & hunting.

Call today for more information!

phone (717) 438-9915
332 Halls Rd • Millerstown PA 17062





WHITETAIL HABITAT DESIGNS

& FOOD PLOT SPECIALTIES

Phone: 330-440-5327

Email: whdfoodplots@gmail.com

Address: 3546 Township Road 125 Millersburg, Ohio 44654

Website: whdfoodplots.com

